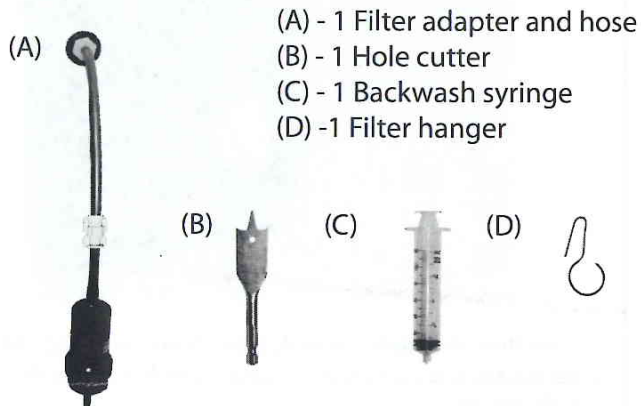


Step 1- Verify Assembly Kit Contents



Translation:

Premyè pa: Idantifye tout pyès pou rasanble filtè a

- (A) Adaptè filtè a ak tib li
- (B) Zouti pou pèsi twou nan bokit la
- (C) Sereng pou netwaye filtè a revèsbakon
- (D) Fil pou kwoke filtè a

Step 2- Find a "clean" bucket



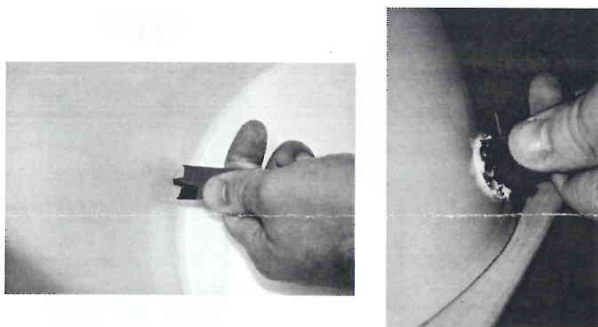
Do not use a bucket/pail that previously stored poisonous chemicals. If possible bucket should be food grade i.e. should have had a food product in it before.

Translation:

Dezyèm pa: Jwenn yon bokit ki pwòp

Pa itilize yon bokit ki te kenbe pwodui chimik ki gen pwazon. Si posib, itilize yon bokit ki pat janm kenbe lòt bagay pase manje ou bwason.

Step 3- Drill a hole in the bucket



POWER DRILL NOT REQUIRED. THIS CAN BE DONE BY HAND. Drill a 22 mm (13/16") hole in the side of the pail by twisting the hole cutter (B) about 38 mm (1.5") from the bottom of the bucket. This height will prevent sediment from entering the filter.

Translation:

Twazyèm pa: Pèse yon twou arebò bokit la

Pran zouti pou pèse twou (B) e fè yon twou 22mm arebò bokit la. Fè li apeprè 38 mm pi wo pase fon bokit la. Konsa sediman ki nan dlo a pap antre nan filtè a.

Step 4- Prepare the adapter



Unscrew the male adapter from the female adapter then remove the o-ring from the male adapter.

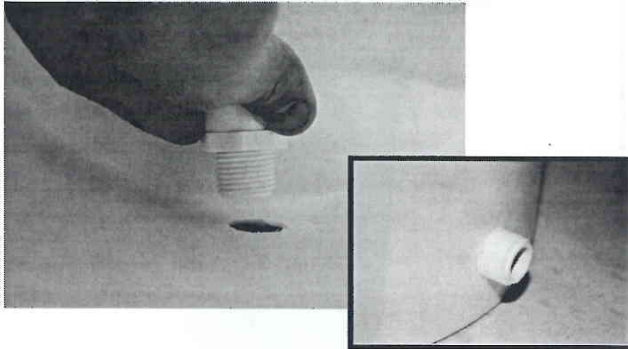
Translation:

Katryèm pa: Prepare adaptè a

Adaptè a (A) gen de pati ki vise ansanm: yon pati mal ak yon pati femèl. Devise yo e retire ti bag plastik ki ansèkle pati mal la.

PointONE Filter™ Instructions Continued...

Step 5- Install male adapter



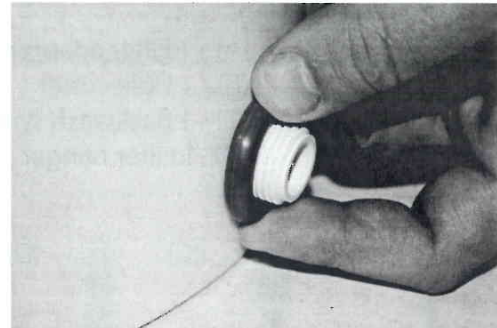
Place the male adapter through the hole inside the bucket so the threads are protruding to the outside of the bucket.

Translation:

Senkyèm pa: Mete pati adaptè a ki mal nan twou bokit a

Pran pati adaptè ki mal la. Mete l nan twou andan bokit la. Pati ki file ap sòti deyò bokit la.

Step 6- Reattach the female adapter



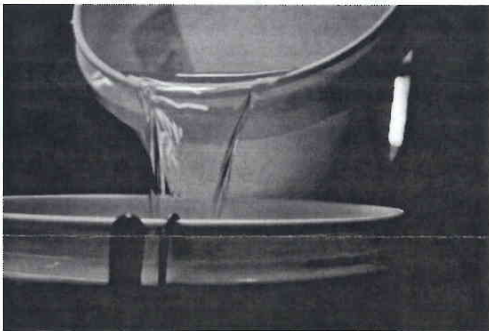
Place the o-ring onto the male threads on the outside of the bucket and screw the female adapter back onto the male threads.

Translation:

Sizyèm pa: Kole pati adaptè ki femèl ak sak ki mal la

Remèt ti bag plastik la sou pati adaptè ki mal kap sòti deyò bokit la. Vise pati adaptè ki femèl la ak pati mal la pou yo kol ansanm.

Step 7- Filtering water



Add water to the bucket and lower the filter head below the bottom of the bucket to start the flow. The greater the distance between the filter and the top of the water line, the faster the water will flow. ALWAYS FILTER WATER INTO A CLEAN RECEPTACLE.

Translation:

Setyèm pa: Filtè dlo pou fè dlo ki pwòp pou bwe (dlo kiligann)

Ak ti fil pou kenbe filtè a (D), kwoke filtè a a bòday bokit la pou leve filtè a. Mete dlo nan bokit la. Desann filtè a pi ba pase fon bokit la pou komanse filtrasyon an. Ranmase dlo nan yon veso ki pwòp.

Step 8- Stopping the flow



Raise filter above pail to stop filter water flow. When not in use, place filter into filter hanger and hang on side of bucket.

Translation:

Uityèm pa: Pou anpeche dlo koule

Pou anpeche dlo koule, leve filtè a pi wo pase bokit la. Lè ou pa sevi ak filtè a, kwoke filtè a a bòday bokit la ak ti fil la (D).



Step 1 - Reserve clean water



Reserve 1 liter (1 quart) of clean water.

Step 2 - Determine if your filter needs cleaning

When water flow stops or slows down the filter needs to be backwashed.

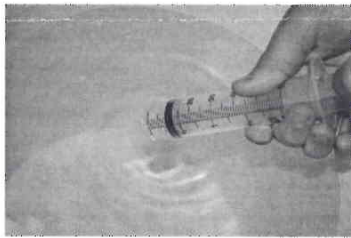
Translation:

Premyè pa: Rezève dlo pwòp
 Mete an rezèv 1 lit dlo pwòp.

Translation:

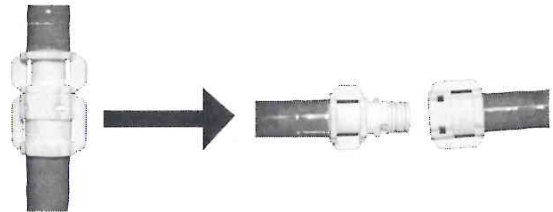
Dezyèm pa: Detèmine si filt la bezwen pwòpte.
 Lè dlo a sispann koule ou koule dousman, filt la nesite netwayaj.

Step 3 - Fill the backwash device



Fill the backwash syringe (C) with filtered water.

Step 4 - Empty bucket and remove filter from hose



Empty all water from the bucket and rinse out sediment, then remove the filter from the hose at the quick disconnect.

Translation:

Twazyèm pa: Ranpli sereng lan
 Ranpli sereng lan (D) ak dlo filtre ke ou te rezève.

Translation:

Katryèm pa: Vide bokit la epi retire filt la
 Vide dlo nan bokit la epi rense sediman nan. Retire filt la nan tiyo a kote yo dekonekte.

Step 5 - Backwashing with contaminated water



Caution: Do not backwash filter with contaminated water. If you must backwash with dirty water run a liter (quart) through the filter before drinking. Do not drink the first liter. Dispose of it properly.

Step 6 - Backwash with syringe

With the filter disconnected from the bucket, place the end of the syringe into the black opening and squeeze, forcing clean water back through the filter. Repeat several times until water comes out clear through the filter. **Make sure all discharge water is disposed of properly.**



Translation:

Senkyèm pa: Si ou pat rezève dlo pwòp
 Prekosyon: Pa netwaye filt la ak dlo ki kontamine. Men si ou pa gen lòt opsyon (si ou pa gen dlo pwòp), netwaye filt la (sizyèm pa) ak 1 lit dlo sal. Apre ou rekomanse filtre dlo a, pa bwe premyè lit dlo ki koule nan filt la. Jete li.

Translation:

Sizyèm pa: Lavaj filt la ak sereng lan
 Dekonekte filt nan bokit la. Plase bout sereng lan nan pati nwa filt la. Prije sereng lan pou fòse dlo pwòp atravè filt la. Repete plizye fwa jiska dlo sòti klè. Jete tout dlo sa a; pa itilize li.

Kèk lòt enstriksyon pou sèvi ak filt la

- Mete sèlman dlo ki klè nan bokit la. Dlo ki pa klè ap bouche filt la rapidman.
- Si dlo se sal anpil, mete l nan yon gwo veso avan. Tann apeprè 2 zè di tan. Sediman nan dlo a ap dousman depoze a fon veso a. Lè dlo a vin pi klè, vide dlo ki klè mete l nan bokit filt la.
- Si dlo se sal anpil, ou ka fè li pi klè si ou filtre dlo ak kèk kouch twal avan ou filtre l nan bokit la.